

# CARATTERISTICHE

SPECIFICATIONS - CARACTÉRISTIQUES -  
CARACTERÍSTICAS - EIGENSCHAFTEN

- COMPOSIZIONE - COMPOSITION - ZUSAMMENSETZUNG - COMPOSICIÓN

**86% Poliestere, 8% Seta, 6% Elastan**

- ALTEZZA - HEIGHT - HÖHE - ALTURA - HAUTEUR

**145 cm**

- PESO - WEIGHT - GEWICHT - POIDS

**95 g/m<sup>2</sup>**

- UTILIZZO - USAGE - VERWENDUNG - USO - UTILISATION



- LAVAGGIO - CARE INSTRUCTION - WASCHEN - LAVADO - LAVAGE





PANINI TESSUTI

- tessuti e tendaggi -

TESSUTO RASETTO ELASTICIZZATO  
EFFETTO SETA



Bianco - A001



Bianco Latte - A010



Rosa Baby - H309



Panna - B200



Beige - B230



Rosa Antico Scuro - H853



Rosa Antico  
Chiaro - H508



Rosa - H688



Rosa Scuro - H715



Rosa Acceso - H262



Fuxia - H243



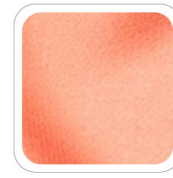
Fuxia Scuro - H850



Corallo - F755



Bruciato - H526



Rosa Pesca Chiaro - E141



Arancio - E651



Rosso - F500



Rosso Scuro - F410



Bordeaux - P812



Borgogna - P460



Orchidea - P242



Viola - G438



Peonia - H339



Lavanda Scuro - G393



Lilla - G871



Lilla - G807



Glicine - G320



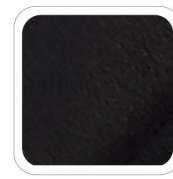
Mattone - C182



Marrone - B796



Testa di Moro - C448



Nero - Z001



Grigio - I233



Grigio Chiaro - I555



Acquamarina  
Chiaro - N520



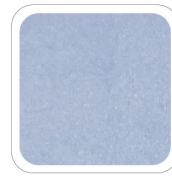
Tiffany - N513



Acquamarina - N620



Azzurro - M454



Fiordaliso - M917



Celeste - L673



Turchese - L424



Blu Elettrico - L394



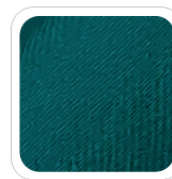
Blu Notte - L002



Avio Scuro - N412



Avio - N539



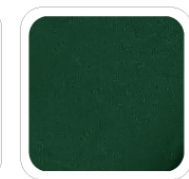
Petrolio - N028



Smeraldo - N971



Verde - N554



Verde Scuro - N456



Salvia Scuro - N189



Verde Militare - N435



Verdone - N245



Verde Oliva - N054



Giallo - D085



Senape - D103



Cammello - B553

